

CUSTOMIZED DATA LABELLING & ANNOTATION SOLUTIONS



500+

Team
Members

95%

Average Accuracy
Rate

3

Global Delivery
Centers

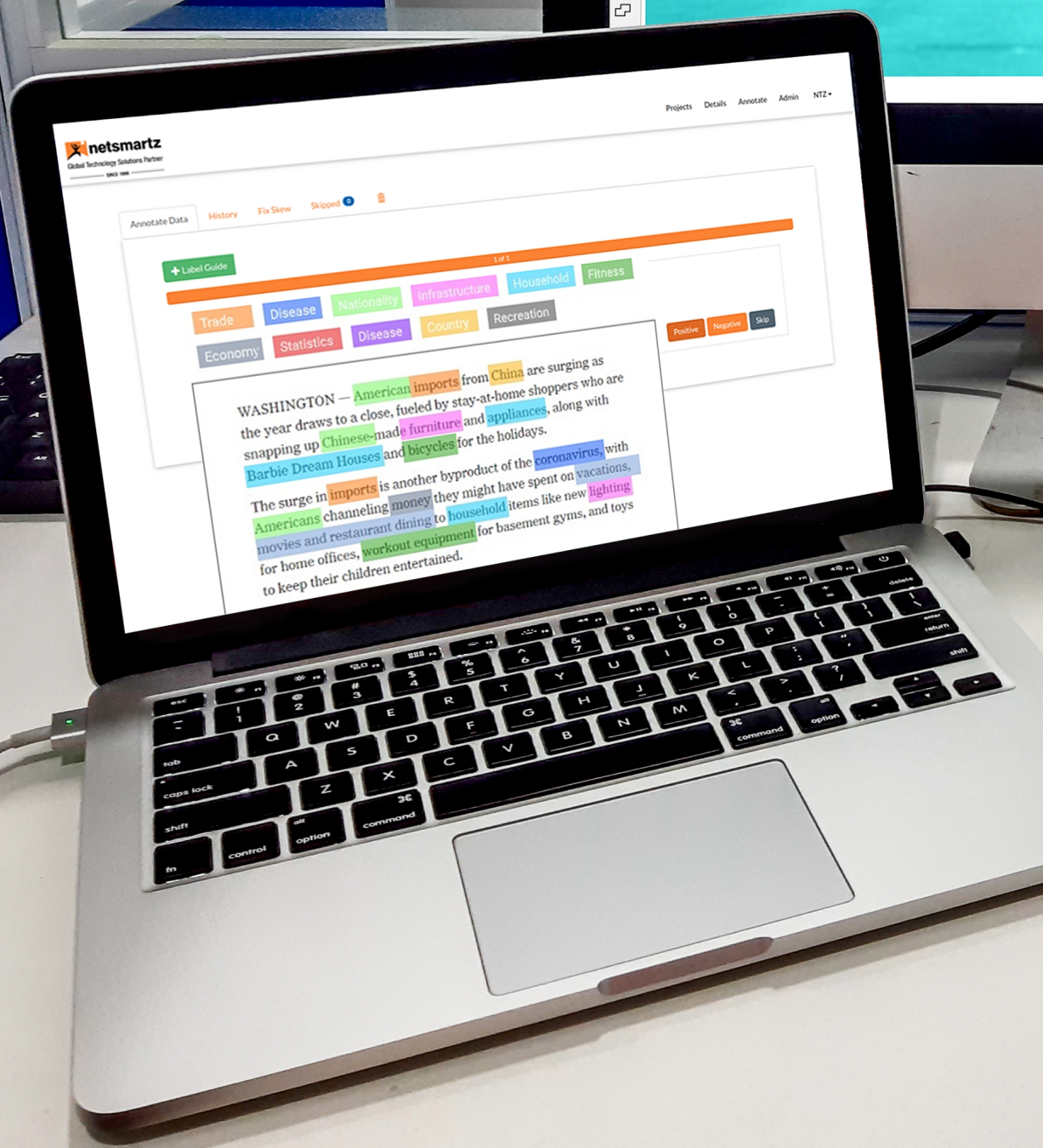
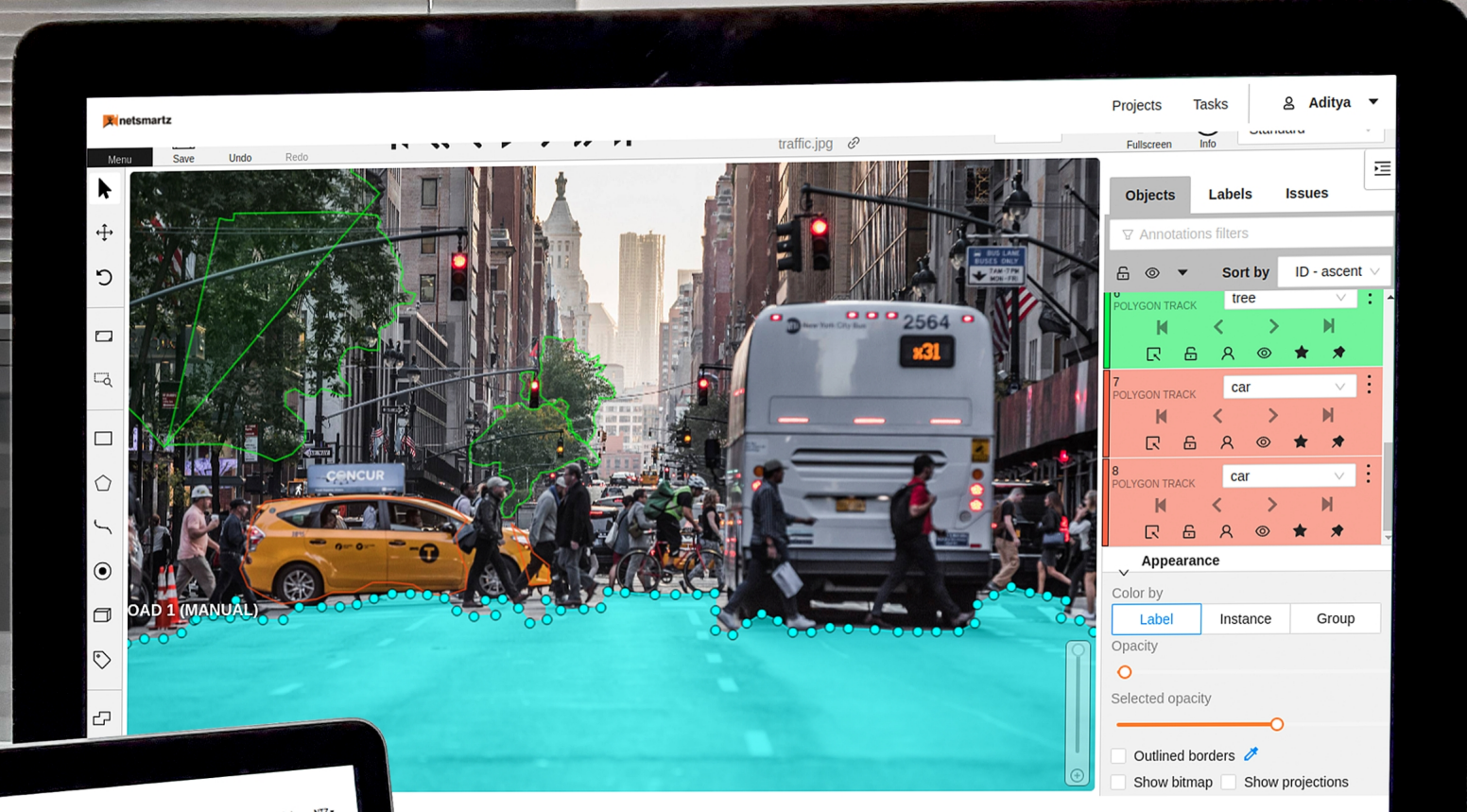
8

Global
Offices

4+

Years Of
Experience

OPERATIONALIZE YOUR AI VISION



KEY SKILLS

Text Annotation

Key Point Annotation

Polyline Annotation

Bounding Box Annotation

Semantic Segmentation

Video Annotation

3D Point Cloud Annotation

What We Do

Alsmartz is your go-to data labeling partner. We build remote teams which work like managed extensions of your in-house data teams. With offices in Canada, USA, Norway, India and Singapore, we are on a mission to solve the challenge of data annotation for AI visionaries. Our hand-picked, trained teams deliver customized data labeling services with accuracy and budget transparency.

While we are enriching datasets for a comprehensive machine learning process, we are also enriching lives of thousands of unemployed, educated Indian youth. Alsmartz believes that in our collective effort we can make one of the most opportunity deprived youth inclusive in the journey of building an artificially intelligent world.

WHAT YOU CAN EXPECT

Your team extension at Alsmartz will feel like your home team. You can expect



Quality

We recruit, train, certify, and manage a highly qualified workforce with a minimum degree in graduation. These teams are managed by seasoned project managers and the work is overseen and audited by dedicated QA managers, thus ensuring accuracy across data sets and fatigue management.



Scale

We work with smaller teams that deliver higher data quality. We train them on benchmarked gold standards and business rules to show them what quality work looks like. Depending on your use case requirement, your team could be in sets of 8-10 workers or lesser, led by a project manager and a QA/success manager. You can scale up or down without any boundation to long term service agreements as per your model iterations.



Security

Owing to us having our own Global Network Operations Center (NOC) with staff including ITIL Expert Level Certified members, we are certified Microsoft Gold partners and AWS advance consulting partners. All our employees are NDA covered with encrypted hardware and data security procedures. Your data is in safe hands!



Flexible Pricing

We understand your AI lifecycle. You can specify your manpower and tool needs if you want, or have your labeling task analyzed by our experts for free to get recommendations on best-fit labeling platforms and workforce requirements. Our cost-effective man-hour based data annotation services can be tweaked to model iterations and assist with almost any data use case, regardless of your project being in stealth mode or enterprise-grade.

DATA ANNOTATION WORKFLOW



Instructions Set

You share your sample data with business rules.



Task Analysis

Our annotation experts share their opinion on workforce hours and tools required for the job



Data Labelling with Checks

Once signed up, our teams work in close contact with you for initial 8 weeks to understand edge cases



Production Grade Annotation

QA Managers monitor throughput closely with gold standards, consensus and sampling



Exported Training Data Feedback

Finished training data run by you for feedback and info on model iterations



OUR OBSERVATION

Artificial Intelligence is the next go-to tool businesses would want to employ in the near future. While there is an enormous scope of its applications to streamline operations and create customer experiences, the machine learning process holds the key to AI technology use cases. Even the most advanced algorithms may not be able to infer and act upon the ground truth, if the ingested data is not of appropriate annotation quality. Thus, data labelling would be the founding block to successful enterprise grade AI solutions ahead.

WHY WORK WITH US

With over \$100 MILLION invested in our infrastructure, your team member(s) would reside in one of the 8 Class A global offices. Founded in the USA with 20+ years, Netsmartz is trusted for its technology processes, security, and testing & auditing teams by Fortune 500 companies such as Samsung, Kodak, and Spraying Systems, plus another 100+ enterprises across the globe.

With all the technical certifications such as being a Microsoft Gold Partner, or AWS advance consultant, we are most proud of our status as a “Great Place To Work”, enabling high performance, low attrition, highly professional culture. Our trained workforce is

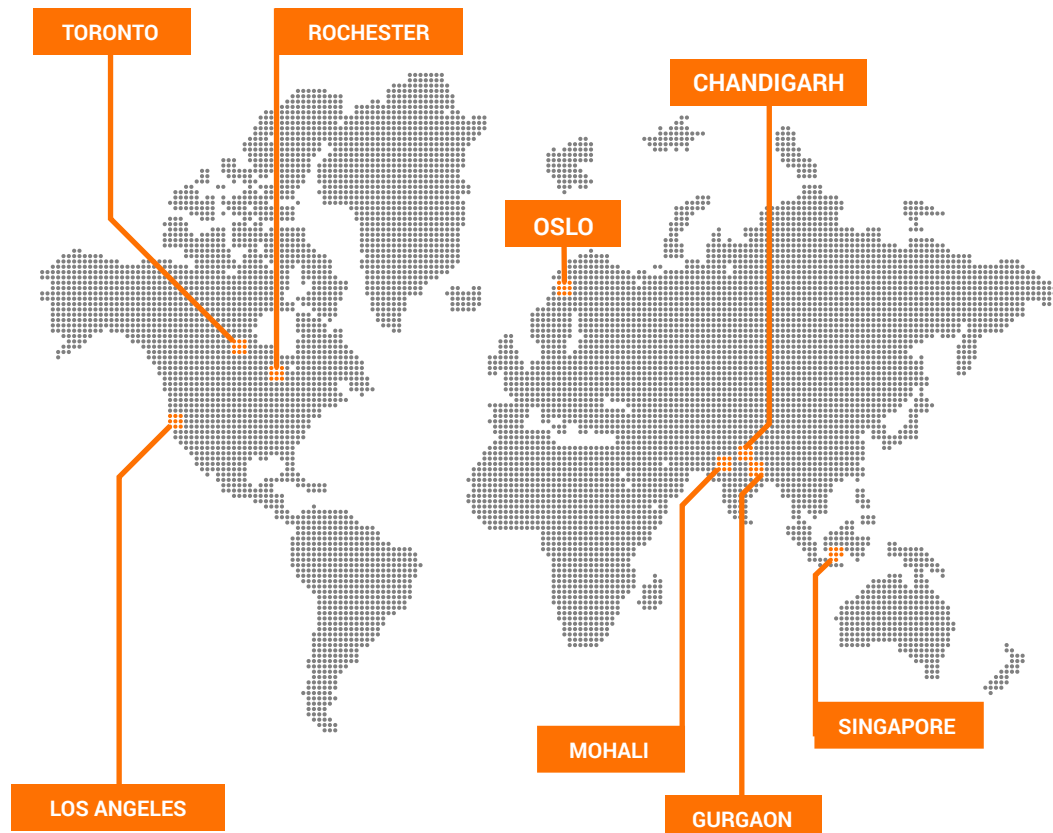
scalable and hands on with using best in class labelling platforms with industry best practices of data management.

We label and process data in text, images, video, audio and sensory formats. Our teams start working with you before you even sign up with a free of charge task analysis. This empowers you with an outsider perspective on possible annotation practices you may be missing on, and optimal man hour budgets best suited for your project. Our work spans across industries and sectors including Automotive, Government Data, Retail, and Healthcare.

ABOUT NETSMARTZ



Founded in 1999, Netsmartz is a privately held company, with a dedicated AI division Alsmartz (incepted in 2015). It operates across the globe with multiple offices , and is a CMMi3 & ISO 9001:2008 certified company. Formed over 20 years ago, we currently have more than 1000 employees, a rich experience of successfully executing 2000+ projects and working with small companies to Fortune 1000 clients.



Rochester, NY (Headquarters)

332 Jefferson Road
Rochester, NY 14623
Phone: 1-585-340-1166

Irvine, CA (Sales Office)

200 Spectrum Center Dr
Irvine,
CA 92618

Toronto (Sales Office)

545 King St W, Toronto
ON M5V 1M1, Canada
Phone: 1-647-542-0114

Oslo (Sales Office)

Gjekstadveien 36
3218 Sandefjord, Norway
Phone: +47 97653546

Chandigarh (Global Delivery Center)

Plot no. 10, Rajiv Gandhi Chandigarh
Technology Park, Chandigarh - 160101
Phone: +91-172-5055200

Mohali (Global Delivery Center)

IT-C-6, Sector 67,
Mohali - 160062,
Punjab, India

Gurgaon (Global Delivery Center)

9th Floor, JMD IT Megapolis
Sector 48, Sohna Road
Gurgaon - 122001

Singapore (Sales Office)

16 Raffles Quay, #33-03 Hong leong
Building, Singapore 048531
Phone: +65-9450-4800



+1 585 633 7555



kanav.jain@netsmartz.com



<https://www.aismartz.com/label-services.php>

Like to find out more about how you can Build Your Team@Netsmartz?

If you need to know more about how we can help you get your dedicated team, do get in touch. We can set up a meeting at a time suitable for you.



ROCHESTER | LOS ANGELES | TORONTO | OSLO | SINGAPORE | CHANDIGARH | MOHALI | GURGAON

HQ: 1250 Pittsford-Victor Road, Ste 190, Pittsford, NY 14534, Phone: 1-585-340-1166